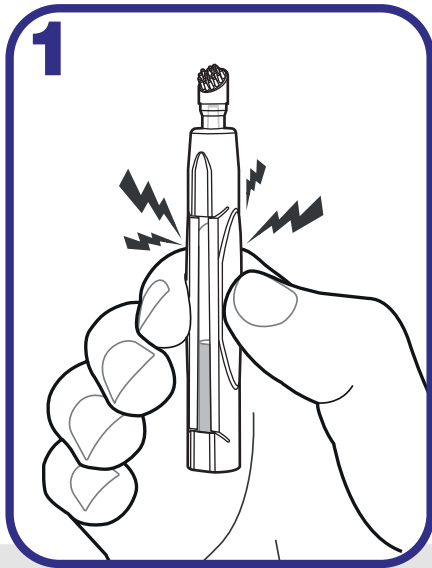
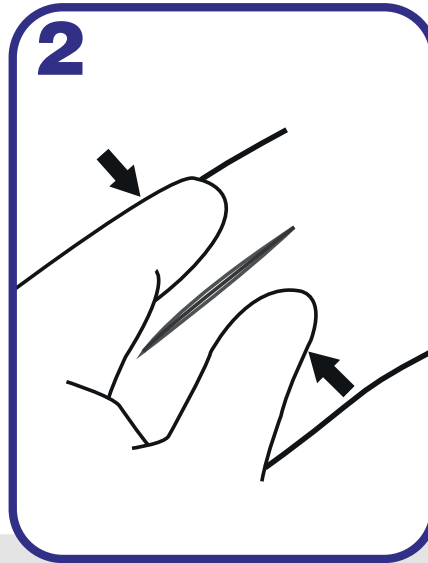


How to use **INDERMIL**[®] **flexifuze**[™] in 3 easy steps.



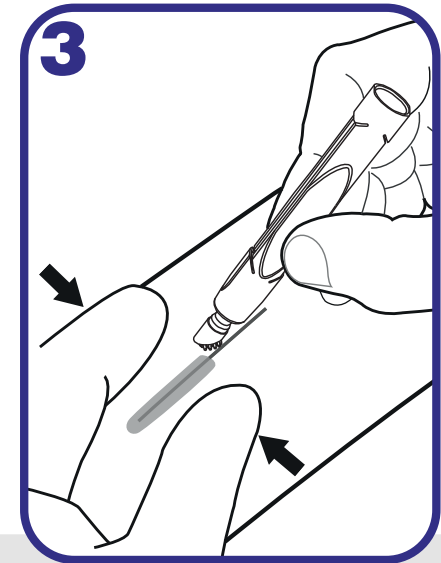
Step 1

Hold the applicator in one hand with the tip pointed upward and away from user and the patient to avoid inadvertent contact. Press the device between forefinger and thumb on the raised pads to break the inner glass ampoule.



Step 2

Approximate the wound edges together.



Step 3

Gently squeeze the tube between thumb and forefinger until the adhesive appears at the brush tip. Apply the adhesive in a thin film over the length of the wound. Hold the wound closed for 60 seconds to complete the bond.

One device can provide wound coverage of over 60cm.